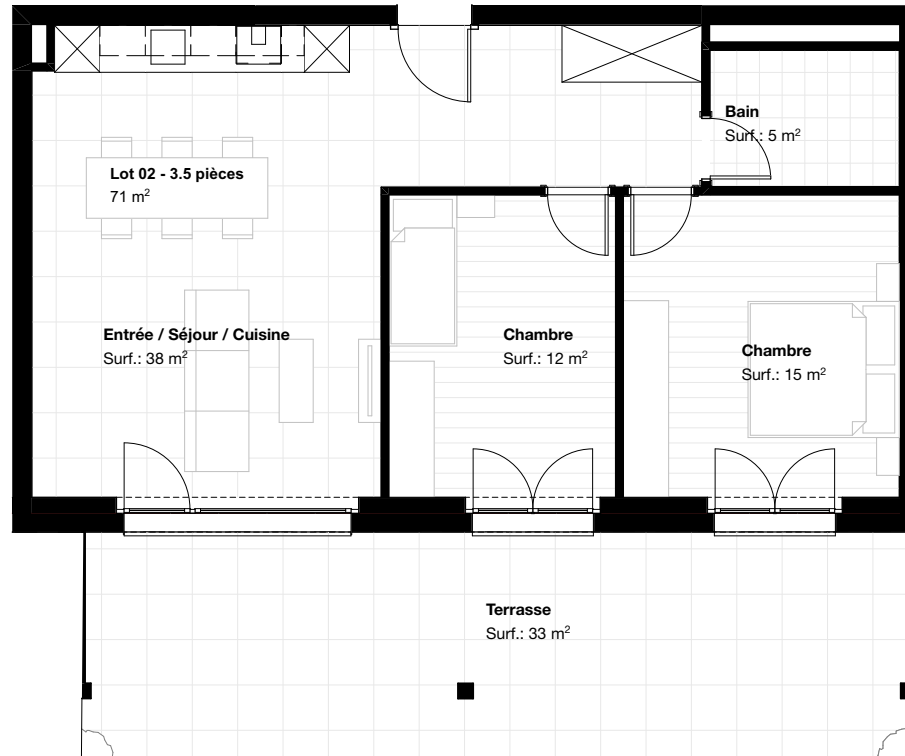
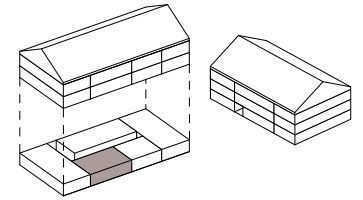
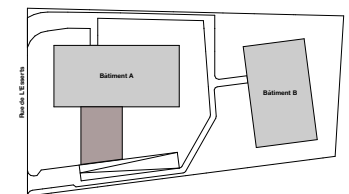




# Les Matins de Duillier



|             |                    |
|-------------|--------------------|
| Bâtiment    | A                  |
| Appartement | 02                 |
| Pièces      | 3,5                |
| Etage       | Rez-de-chaussée    |
| Surface     |                    |
| habitable   | 71 m <sup>2</sup>  |
| cave        | 4 m <sup>2</sup>   |
| terrasse    | 33 m <sup>2</sup>  |
| jardin      | 126 m <sup>2</sup> |



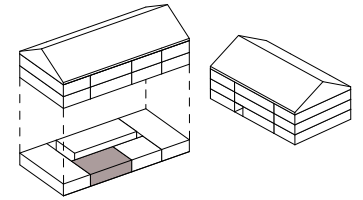
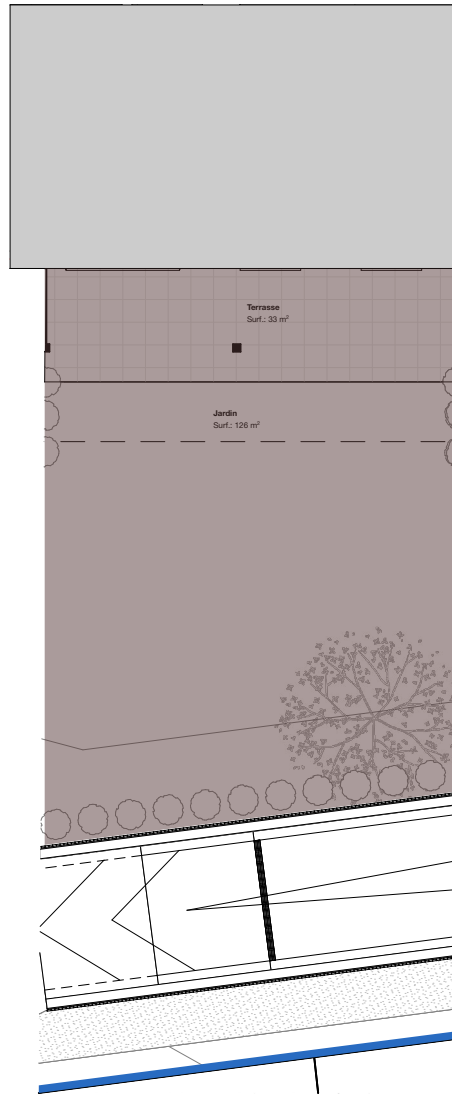
Echelle 1:100

JEAN-FRANCOIS SEGATORI SA  
BUREAU D'ETUDES & REALISATIONS

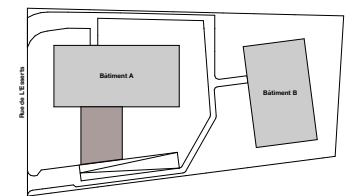
**SC\_WORKS**  
Atelier d'Architecture  
www.segatori.ch 021 802 81 00



# Les Matins de Duillier



|             |                    |
|-------------|--------------------|
| Bâtiment    | BATIMENT A         |
| Appartement | 02                 |
| Pièces      | 3,5                |
| Etage       | Rez-de-chaussée    |
| Surface     |                    |
| habitable   | 71 m <sup>2</sup>  |
| cave        | 4 m <sup>2</sup>   |
| terrasse    | 33 m <sup>2</sup>  |
| jardin      | 126 m <sup>2</sup> |



JEAN-FRANCOIS SEGATORI SA  
BUREAU D'ETUDES & REALISATIONS

**SC\_WORKS**  
Atelier d'Architecture  
www.segatori.ch 021 802 81 00

0 2 4 6 8 10m

Echelle 1:200